

MOTOR SPECIFICATIONS

02 M3B075 750W Low Inertia

Specifications

Motor Model : M3B075C □□□□* *

750W

80mm FLANGE

H3

60/30

IP65

Basic Specifications

Item	Unit	Specifications	
Rotor inertia	-	Low	
Fitting flange size	mm	80 sq.	
Approximate mass	Without brake	kg	2.2
	With brake		3.0
Compatible amplifier model	-	SD3080C3**	
Voltage	V	AC200 V to 240 V	
Rated output	W	750	
Rated torque	N·m	2.39	
Instantaneous maximum torque	N·m	7.1	
Rated current	A	4.2	
Instantaneous maximum current	A	12.2	
Rated speed	r/min	3,000	
Maximum speed	r/min	6,000	
Torque constant	N·m/A	0.63	
Voltage constant-KE	mV/(r/min)	21.9	
Rated power	Without brake	kW/s	76.6
	With brake		60.7
Mechanical time constant	Without brake	ms	0.40
	With brake		0.50
Electrical time constant	ms	4.60	
Rotor moment of inertia	Without brake	$\times 10^{-4} \text{kg} \cdot \text{m}^2$	0.74
	With brake		0.94

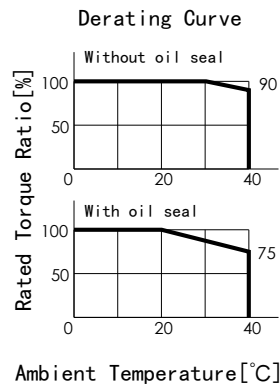
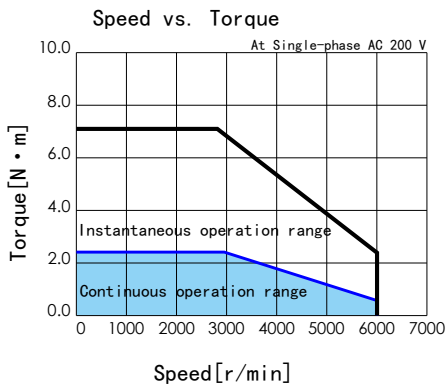
Brake Specifications

Item	Unit	Specifications
Usage	-	Holding
Rated voltage	V	DC 24 V \pm 10 %
Rated current	A	0.4
Static friction torque	N·m	≥ 2.39
Pull-in time	ms	≤ 70
Release time	ms	≤ 20
Release voltage	V	$\geq \text{DC } 1 \text{ V}$

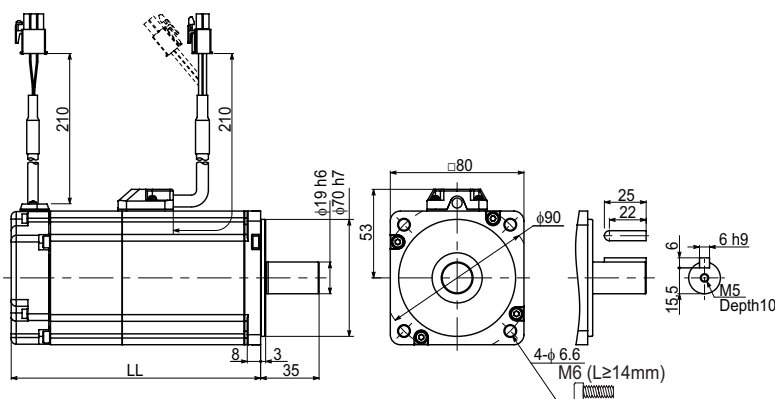
Allowable load

Item	Unit	Specifications
Radial	N	392
Thrust	N	147

Torque Characteristics



External Dimensions



	(mm)	
Brake	Without	With
Motor Model	M3B075C*N	M3B075C*B
LL	107.3	144.3

The straight shaft products are not tapped end.