

Specifications

Motor Model : M5A100C □□□□* *

1kW

130 SQUARE

F5

30° 20-0

IP 67

Basic Specifications

Item	Unit	Specifications	
Rotor inertia	-	Middle	
Fitting flange size	mm	130 sq.	
Approximate mass	Without brake	kg	5.6
	With brake		7.0
Compatible amplifier model	-	SD3100C4**	
Voltage	V	AC200 V to 240 V	
Rated output	W	1,000	
Rated torque	N·m	4.77	
Instantaneous maximum torque	N·m	14.3	
Rated current	A	5.6	
Instantaneous maximum current	A	16.8	
Rated speed	r/min	2,000	
Maximum speed	r/min	3,000	
Torque constant	N·m/A	0.88	
Voltage constant-KE	mV/(r/min)	30.9	
Rated power	Without brake	kW/s	50.0
	With brake		36.5
Mechanical time constant	Without brake	ms	0.76
	With brake		1.05
Electrical time constant	ms	10.1	
Rotor moment of inertia	Without brake	$\times 10^{-4} \text{kg} \cdot \text{m}^2$	4.56
	With brake		6.24

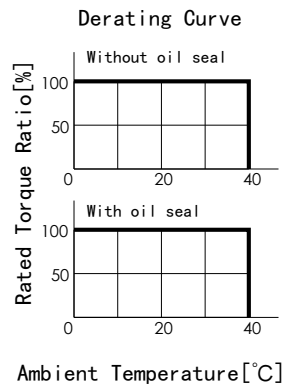
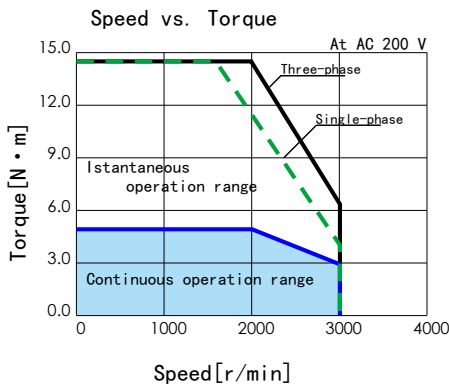
Brake Specifications

Item	Unit	Specifications
Usage	-	Holding
Rated voltage	V	DC 24 V \pm 10 %
Rated current	A	1.0
Static friction torque	N·m	\geq 9.55
Pull-in time	ms	\leq 120
Release time	ms	\leq 30
Release voltage	V	\geq DC 1 V

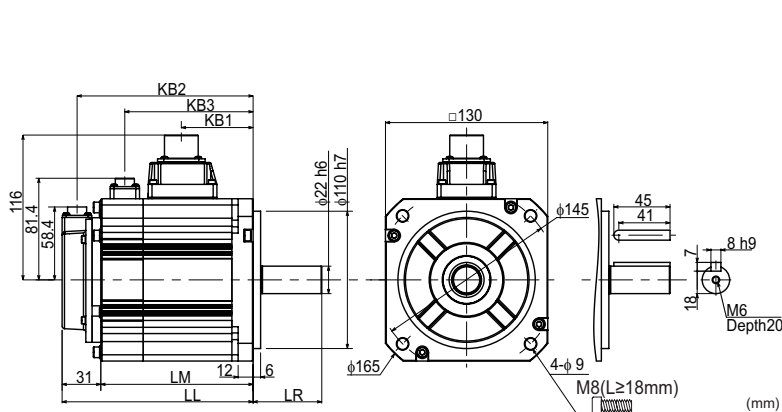
Allowable load

Item	Unit	Specifications
Radial	N	490
Thrust	N	196

Torque Characteristics



External Dimensions



(mm)

Brake	Without	With
Motor Model	M5A100C*N	M5A100C*B
LL	128.0	153.0
LM	97.0	122.0
LR	55.0	
KB1	57.5	
KB2	116.0	141.0
KB3	-	102.8

The straight shaft products are not tapped end.