

### Specifications

Motor Model : M5A150C □□□□\* \*

1.5kW

130 SQUARE

F5

50°C/20°C

IP67

#### Basic Specifications

Item	Unit	Specifications	
Rotor inertia	-	Middle	
Fitting flange size	mm	130 sq.	
Approximate mass	Without brake	kg	7.0
	With brake	kg	8.4
Compatible amplifier model	-	SD3150C6**	
Voltage	V	AC200 V to 240 V	
Rated output	W	1,500	
Rated torque	N·m	7.16	
Instantaneous maximum torque	N·m	21.5	
Rated current	A	9.0	
Instantaneous maximum current	A	27	
Rated speed	r/min	2,000	
Maximum speed	r/min	3,000	
Torque constant	N·m/A	0.81	
Voltage constant-KE	mV/(r/min)	28.4	
Rated power	Without brake	kW/s	76.9
	With brake		61.4
Mechanical time constant	Without brake	ms	0.60
	With brake		0.75
Electrical time constant	ms	12.2	
Rotor moment of inertia	Without brake	$\times 10^{-4} \text{kg} \cdot \text{m}^2$	6.67
	With brake		8.35

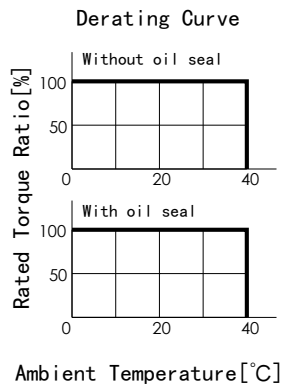
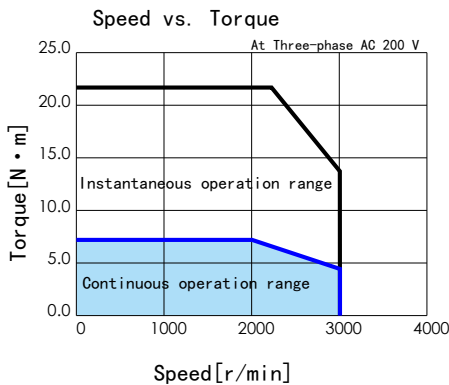
#### Brake Specifications

Item	Unit	Specifications
Usage	-	Holding
Rated voltage	V	DC 24 V $\pm$ 10 %
Rated current	A	1.0
Static friction torque	N·m	$\geq 9.55$
Pull-in time	ms	$\leq 120$
Release time	ms	$\leq 30$
Release voltage	V	$\geq \text{DC } 1 \text{ V}$

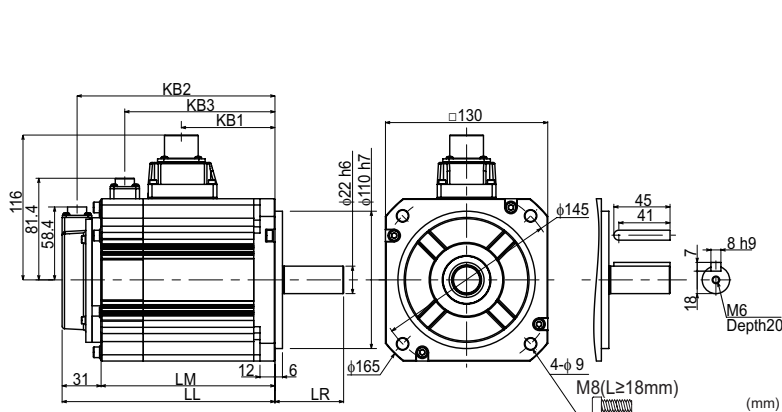
#### Allowable load

Item	Unit	Specifications
Radial	N	490
Thrust	N	196

### Torque Characteristics



### External Dimensions



(mm)

Brake	Without	With
Motor Model	M5A150C*N	M5A150C*B
LL	145.5	170.5
LM	114.5	139.5
LR	55.0	
KB1	75.0	
KB2	133.5	158.5
KB3	-	120.3

The straight shaft products are not tapped end.