

Specifications

Motor Model : M5A200C □□□□* *

2kW

180°

F5

50°C
20°C

IP57

Basic Specifications

Item	Unit	Specifications	
Rotor inertia	-	Middle	
Fitting flange size	mm	130 sq.	
Approximate mass	Without brake	kg	8.4
	With brake	kg	9.8
Compatible amplifier model	-	SD3200C8**	
Voltage	V	AC200 V to 240 V	
Rated output	W	2,000	
Rated torque	N·m	9.55	
Instantaneous maximum torque	N·m	28.6	
Rated current	A	11.9	
Instantaneous maximum current	A	35.7	
Rated speed	r/min	2,000	
Maximum speed	r/min	3,000	
Torque constant	N·m/A	0.85	
Voltage constant-KE	mV/(r/min)	29.6	
Rated power	Without brake	kW/s	104.9
	With brake		87.9
Mechanical time constant	Without brake	ms	0.58
	With brake		0.69
Electrical time constant	ms	12.2	
Rotor moment of inertia	Without brake	$\times 10^{-4} \text{kg} \cdot \text{m}^2$	8.70
	With brake		10.38

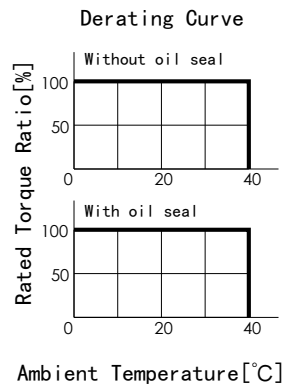
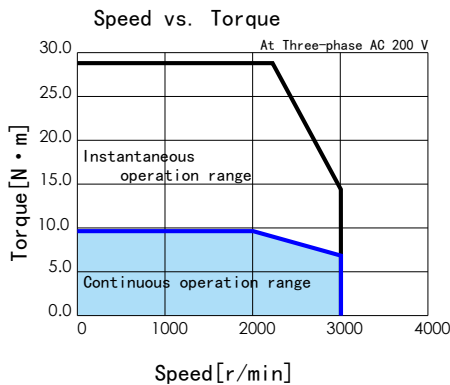
Brake Specifications

Item	Unit	Specifications
Usage	-	Holding
Rated voltage	V	DC 24 V \pm 10 %
Rated current	A	1.0
Static friction torque	N·m	\geq 9.55
Pull-in time	ms	\leq 120
Release time	ms	\leq 30
Release voltage	V	\geq DC 1 V

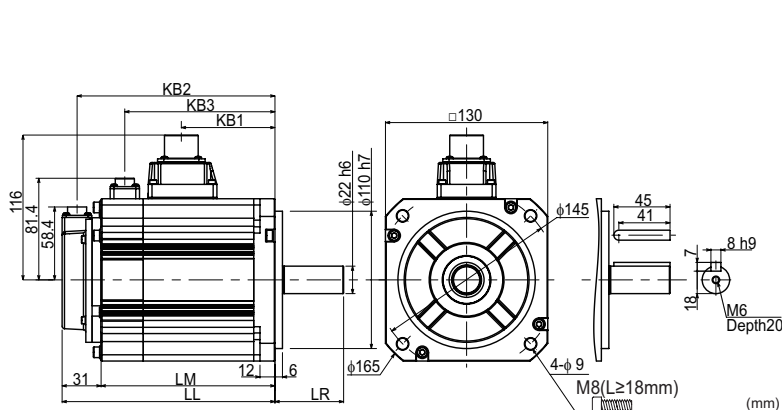
Allowable load

Item	Unit	Specifications
Radial	N	490
Thrust	N	196

Torque Characteristics



External Dimensions



	(mm)	
Brake	Without	With
Motor Model	M5A200C*N	M5A200C*B
LL	163.0	188.0
LM	132.0	157.0
LR	55.0	
KB1	92.5	
KB2	151.0	176.0
KB3	-	137.8

The straight shaft products are not tapped end.