

MOTOR SPECIFICATIONS

02 M5B010 100W Middle Inertia

Specifications

Motor Model : M5B010C □□□□* *



Basic Specifications

Item	Unit	Specifications	
Rotor inertia	-	Middle	
Fitting flange size	mm	40 sq.	
Approximate mass	Without brake	kg	0.5
	With brake	kg	0.8
Compatible amplifier model	-	SD3010CZ**	
Voltage	V	AC200 V to 240 V	
Rated output	W	100	
Rated torque	N·m	0.32	
Instantaneous maximum torque	N·m	1.12	
Rated current	A	0.97	
Instantaneous maximum current	A	3.3	
Rated speed	r/min	3,000	
Maximum speed	r/min	6,000	
Torque constant	N·m/A	0.35	
Voltage constant-KE	mV/(r/min)	12.3	
Rated power	Without brake	kW/s	16.5
	With brake		14.6
Mechanical time constant	Without brake	ms	1.17
	With brake		1.32
Electrical time constant	ms	0.89	

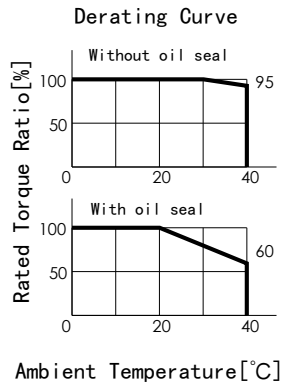
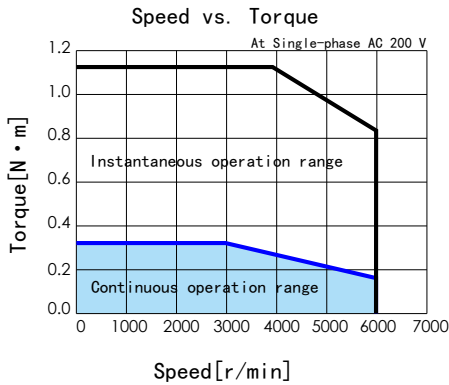
Brake Specifications

Item	Unit	Specifications
Usage	-	Holding
Rated voltage	V	DC 24 V ± 10 %
Rated current	A	0.25
Static friction torque	N·m	≥ 0.32
Pull-in time	ms	≤ 35
Release time	ms	≤ 20
Release voltage	V	≥ DC 1 V

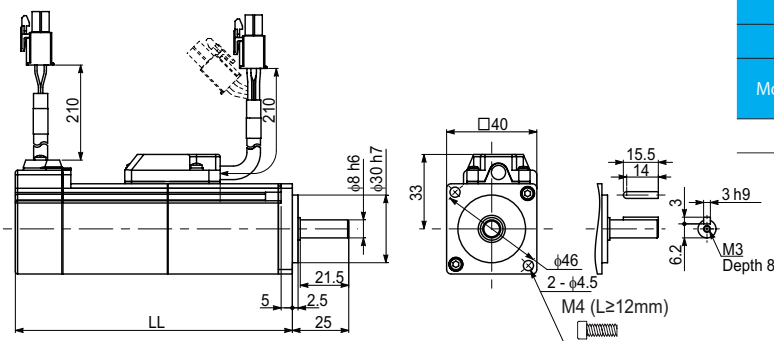
Allowable load

Item	Unit	Specifications
Radial	N	68
Thrust	N	58

Torque Characteristics



External Dimensions



(mm)

Brake	Without		With		
	Oil Seal	Without	With	Without	With
Motor Model	M5B010C*NN	M5B010C*NS	M5B010C*BN	M5B010C*BS	
LL	82.4	88.0	122.8	128.4	

The straight shaft products are not tapped end.