

Specifications

Motor Model : M7B075C □□□□* *



Basic Specifications

| Item | Unit | Specifications | |
|-------------------------------|---------------|---------------------------------------------|------|
| Rotor inertia | - | High | |
| Fitting flange size | mm | 80 sq. | |
| Approximate mass | Without brake | kg | 2.5 |
| | With brake | | 3.3 |
| Compatible amplifier model | - | SD3080C3** | |
| Voltage | V | AC200 V to 240 V | |
| Rated output | W | 750 | |
| Rated torque | N·m | 2.39 | |
| Instantaneous maximum torque | N·m | 7.1 | |
| Rated current | A | 4.2 | |
| Instantaneous maximum current | A | 12.2 | |
| Rated speed | r/min | 3,000 | |
| Maximum speed | r/min | 6,000 | |
| Torque constant | N·m/A | 0.63 | |
| Voltage constant-KE | mV/(r/min) | 21.9 | |
| Rated power | Without brake | kW/s | 35.4 |
| | With brake | | 31.6 |
| Mechanical time constant | Without brake | ms | 0.86 |
| | With brake | | 0.96 |
| Electrical time constant | ms | 4.60 | |
| Rotor moment of inertia | Without brake | $\times 10^{-4} \text{kg} \cdot \text{m}^2$ | 1.61 |
| | With brake | | 1.81 |

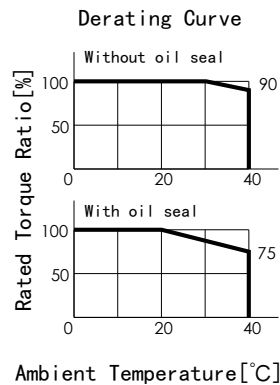
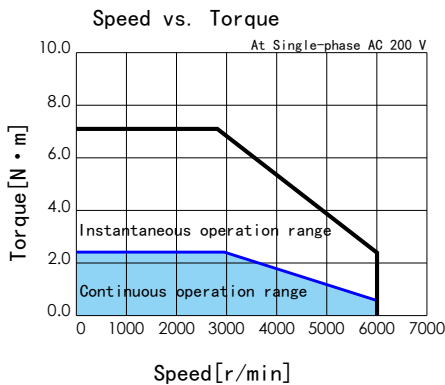
Brake Specifications

| Item | Unit | Specifications |
|------------------------|------|-------------------------------|
| Usage | - | Holding |
| Rated voltage | V | DC 24 V \pm 10 % |
| Rated current | A | 0.4 |
| Static friction torque | N·m | ≥ 2.39 |
| Pull-in time | ms | ≤ 70 |
| Release time | ms | ≤ 20 |
| Release voltage | V | $\geq \text{DC } 1 \text{ V}$ |

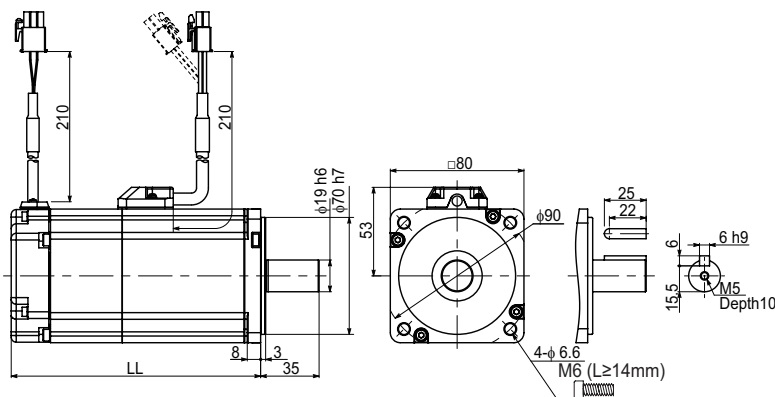
Allowable load

| Item | Unit | Specifications |
|--------|------|----------------|
| Radial | N | 392 |
| Thrust | N | 147 |

Torque Characteristics



External Dimensions



| | (mm) | |
|-------------|-----------|-----------|
| Brake | Without | With |
| Motor Model | M7B075C*N | M7B075C*B |
| LL | 122.3 | 159.3 |

The straight shaft products are not tapped end.