

## Specifications

Motor Model : M3B020C □□□□\* \*



### Basic Specifications

| Item                          | Unit          | Specifications                              |      |
|-------------------------------|---------------|---|------|
| Rotor inertia                 | -             | Low   |      |
| Fitting flange size           | mm            | 60 sq.                                      |      |
| Approximate mass              | Without brake | kg  | 0.8  |
|                               | With brake    |   | 1.3  |
| Compatible amplifier model    | -             | SD3020C1**                                  |      |
| Voltage                       | V             | AC200 V to 240 V                            |      |
| Rated output                  | W             | 200   |      |
| Rated torque                  | N·m           | 0.64  |      |
| Instantaneous maximum torque  | N·m           | 1.91  |      |
| Rated current                 | A             | 1.7   |      |
| Instantaneous maximum current | A             | 5.2   |      |
| Rated speed                   | r/min         | 3,000                                       |      |
| Maximum speed                 | r/min         | 6,000                                       |      |
| Torque constant               | N·m/A         | 0.41  |      |
| Voltage constant-KE           | mV/(r/min)    | 14.3  |      |
| Rated power                   | Without brake | kW/s  | 28.2 |
|                               | With brake    |   | 23.5 |
| Mechanical time constant      | Without brake | ms  | 0.72 |
|                               | With brake    |   | 0.87 |
| Electrical time constant      | ms            | 2.53  |      |
| Rotor moment of inertia       | Without brake | $\times 10^{-4} \text{kg} \cdot \text{m}^2$ | 0.14 |
|                               | With brake    |   | 0.17 |

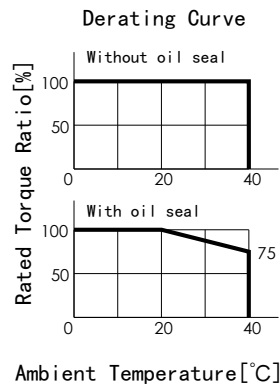
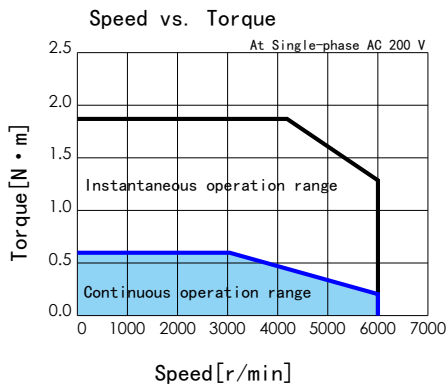
### Brake Specifications

| Item                   | Unit | Specifications    |
|------------------------|------|-------------------|
| Usage                  | -    | Holding           |
| Rated voltage          | V    | DC 24V $\pm$ 10 % |
| Rated current          | A    | 0.3               |
| Static friction torque | N·m  | $\geq$ 1.27       |
| Pull-in time           | ms   | $\leq$ 50         |
| Release time           | ms   | $\leq$ 15         |
| Release voltage        | V    | $\geq$ DC 1 V     |

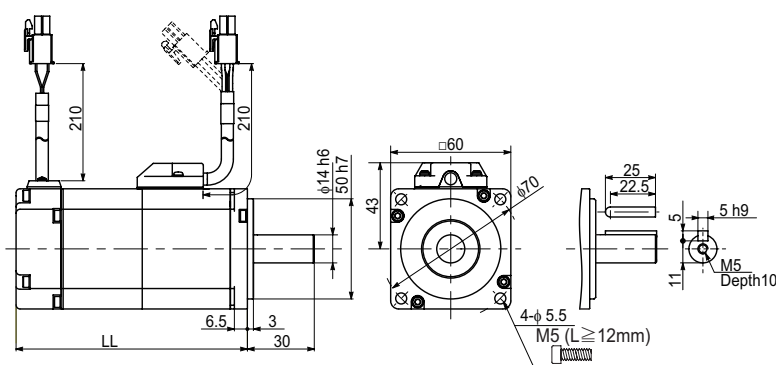
### Allowable load

| Item   | Unit | Specifications |
|--------|------|----------------|
| Radial | N    | 245            |
| Thrust | N    | 98             |

## Torque Characteristics



## External Dimensions



|             | (mm)      |           |
|-------------|-----------|-----------|
| Brake       | Without   | With      |
| Motor Model | M3B020C*N | M3B020C*B |
| LL          | 76.5      | 113.0     |

The straight shaft products are not tapped end.